

EXHIBITIONS

THE GARDENS GALLERY

Montpellier Gardens, Montpellier, Cheltenham
www.gardensgallery.co.uk
Core Hours :10am – 5pm
Twitter: @gardensgallery
Facebook: The Gardens Gallery

31 July – 6 August 2013

'CLOSE ENCOUNTERS'

MICHAEL PAUL

The paintings focus on the curious connections between the subjects – Michael is fascinated by fleeting moments, during which essences of relationships can be captured. Which paintings depict the heads-together sort of closeness chosen by friends? Which depict a closeness that has been foisted upon strangers?



Michael Paul

7 – 13 August 2013

'PRIMARY WATERCOLOUR'

DESMOND ROSSER-SMITH

Elwyn Rosser-Smith will be exhibiting watercolour paintings and Giclee prints of his late Father's work. The exhibition will be covering a lifetime of watercolour painting covering many different aspects and subjects.



Desmond Rosser-Smith

14 – 20 August 2013

'A SPECIAL PLACE TO BE'

SUSANNA DAVIES & ESTER SIMPSON

Seas, Mountains and Woodlands. Birds of prey, Cats, Cows and Chickens. Two sister artists who have grown up in Gloucestershire, share their personal encounters. They have drawn from escapist moments by the sea, favourite pathways within the Forest of Dean, family walks up May hill and chance sightings of birds of prey.



21 – 27 August 2013

'COTSWOLD UNCUT'

KATHARINE DOVE

My work is inspired by my surroundings. The Regency buildings and colourful parks and trees of Cheltenham have provided plenty of ideas as I have developed my own style of using mixed media. Since I became a full time artist I have a lot more time to travel and to paint a much greater variety of subjects. Invariably though I find myself drawn to the built environment and its juxtaposition with the natural world.



Katharine Dove

28 August – 10 September 2013

LORNA RANKIN & LYN CLARKE

Watercolours and acrylics, textiles, jewellery

THE MONTPELLIER GALLERY

First Floor, 1 Montpellier Terrace

Cheltenham GL50 1UR

www.themontpellier.co.uk/gallery

August 2013

SUMMER SHOW

JEAN HAINES & ALISON JOHNSON

Having lived and travelled in many countries Jean Haines has had the opportunity to develop her skills creating incredible paintings whilst under the influence of masters from many countries including Asia, the Middle East and Europe. Alison Johnson's inspiration is driven by travel, feeling and seeing wild and raw coastlines, to bleak and smouldering moors.



Jean Haines

COFFEE & CO

7 Montpellier Terrace, Cheltenham

www.coffeeandco.co

Until 27 September 2013

A SUMMER EXHIBITION

Artwork by Linda Davies, Sue Durkin, Ray Hill, Sallie Taylor, Jenny Westbrook



Jenny Westbrook

PARAGON GALLERY

4 Rotunda Terrace, Montpellier Street,
Cheltenham GL50 1SW
www.paragongallery.co.uk

An exhibition offering a wide diversity of art across subject, media and style, from the classical to the avant-garde, from local, UK and international artists



Elena Bazanova

CORINIUM MUSEUM

Park Street, Cirencester GL7 2BX
www.coriniummuseum.org

Until 1 September 2013

POTS FROM THE DRAGON'S KILN

A return of the popular Eeles Family Pottery team with a highly collectable range of ceramics using different firing techniques and surface decoration. The Eeles Family use a three chambered dragon kiln of the dragon type. It takes 4,000 pots to fill the kiln and is fired using wood, capturing brilliant surfaces on the vessels.



NEW BREWERY ARTS

Cirencester
www.newbreweryarts.org.uk/

Until 8 September 2013

'MAKING MEMORIES

A celebration of life and love in clay with
Claire Loder



Claire Loder

Until 4 August 2013

POP UP GALLERY TRUDI HAYDEN

After showing my paintings in many group exhibitions in and around the Cotswolds and South West, I am finally having my first solo gallery show. I am very pleased to be able to bring together the largest collection yet of my original paintings, plus many Fine Art Prints, in the lovely setting of the New Brewery Arts Pop up Gallery in Cirencester, Glos.



Trudi Hayden

NATURE IN ART

Twigworth
www.nature-in-art.org.uk

Until 1 September 2013

FIVE DECADES

Nature in Art's 25th anniversary coincides with the 50th anniversary of the Society of Wildlife Artists (SWLA). In recognition of this milestone this is a unique and fascinating display that highlights the society's rich talent and gives an insight into the creative journey of some of its artists.

6 August – 1 September 2013

WILDLIFE MASTERS

Selected original works by five of the best known British wildlife artists - David Shepherd, Gary Hodges, Geoffrey Dashwood, Anthony Gibbs and Simon Combes, all of whom have had one-man exhibitions at Nature in Art during our first 25 years.

THE BEACON HALL

The Painswick Centre, Bisley Street
Painswick GL6 6QQ

15 – 18 August 2013

10am – 5pm

THE GLOUCESTERSHIRE GUILD OF CRAFTSMEN SUMMER SHOW

Join us for the Private View of our Summer Show on Wednesday 14th August between 7-9pm where the exhibition will be formally opened by Tanya Harrod, author of both 'The Crafts in Britain in the 20th Century' and a recent biography of Michael Cardew, one of the Guild's founding members.

To continue the celebrations of our 80th Anniversary year there will be an exhibition looking back at some of the Guilds internationally renowned members such as Bryant Fedden and Gerry Carter. We also have work from a selection of this year's best craft based graduates and furniture from guest exhibitor Jason Heap.

For more information please contact Nick Ozanne on nick@letoariadne.com



Camilla Ward

the open west

NEWARK PARK

Ozleworth, Wotton-under Edge GL12 7PZ

Until 18 August 2013

THE OPEN WEST

The open west is an annual open competition and exhibition inviting work from national and international artists practising contemporary and conceptual art. Work submitted can include painting, installation, film and sound, textile, photography, ceramics, drawing and print, performance, sculpture, glass, metal and plastics.

In 2013 **the open west** will be exhibiting at two venues, starting at the National Trust's Newark Park. This intriguing historic house presents a fascinating setting for **the open west** to curate contemporary artworks throughout the existing collections.

In October the exhibition will move to the Cheltenham Art Gallery & Museum.

46 artists have been selected for this year's exhibition. This includes local sculptor **Becky Turner** who is the Marketing Officer for The Gardens Gallery.

See **Art e.Noticeboard** for free Drawing Workshops.



Becky Turner

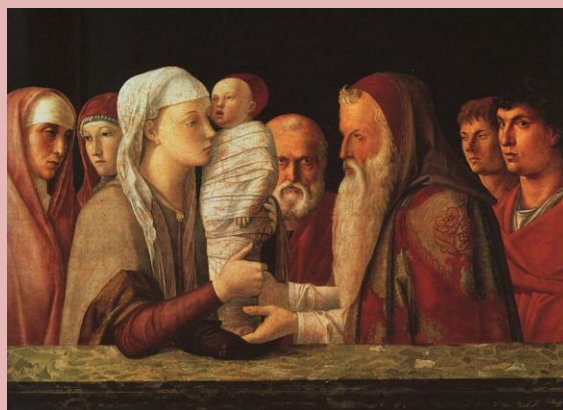
art e.noticeboard

CALL FOR ARTISTS

'THE PRESENTATION AT THE TEMPLE'



Andrea Mantegna 1431-1506



Giovanni Bellini 1430 - 1516

The two Italian brothers in law, Andrea Mantegna and Giovanni Bellini, made very similar versions of **The Presentation at the Temple** Luke 2 v22-40. But you can tell the story using your own imagery for an exhibition at Gloucester Cathedral 7 – 19 October 2013. Bishop Michael of Gloucester will select an image for his Christmas card from the exhibition with a £200 prize and two further awards of £100 each.

Further details at www.pjcrook.com/cm.html

THE FROG & FIDDLE
High Street Cheltenham

**CALL FOR ARTISTS
SOLD FOR A SONG**

SOLD FOR A SONG is currently seeking artist submissions to be included in our first ever exhibition and silent auction.

'Sold For A Song' will showcase an eclectic selection of paintings, original artist-made prints and photography, all of which are for auction. We want to emphasize that owning art shouldn't be reserved for the super rich and with a prices never exceeding £200 and pieces from just £10 there is something for every budget.

WHAT CAN I SUBMIT

All works will be considered (Sculpture, prints, photos, paintings, illustrations etc). You can submit up to 10 items for consideration.

HOW TO SUBMIT

Send your selection of images to joannebrumwell@gmail.com. Please title your emails '**SOLD FOR A SONG SUBMISSIONS**'. Ensure images are attached as JPEG files.

Or feel free to use a File uploading service for larger images.

Last date for submissions - **10/10/13**

Please include the following information in your email: **YOUR NAME > IMAGE**

TITLES > RESERVE PRICES > A SMALL ARTIST/WORKING STATEMENT (OPTIONAL)>

YOUR WEB

ADDRESS (OPTIONAL)

THE RULES

1. If your work is accepted we can only guarantee that one image will be included in the final selection.

2. All work must be for sale. Reserve prices can not be altered once the auction is live. All bids are final.

3. All work sold will be subject to a 20% commission; your fee will transferred directly to your bank account on Tuesday 3rd December . There will also be a small £5 hanging fee per artist to cover venue hire & set up, staffing & materials.

4. The maximum price allowed is £200, there is no minimum.

5. You must be able to drop-off and collect your work on the assigned dates and be able to exhibit for the full duration of the show. **Drop off - Friday 29th**

Nov 12-3pm - Collection of unsold work - Tuesday 3rd Dec 10 - 11am

6. All work must be ready to display. If you have any questions regarding this please ask .

GLOUCESTERSHIRE RESOURCE CENTRE

City Works, Alfred Street, Gloucester GL1 4DF

CALL FOR ARTISTS

This dynamic community hub in Gloucester is seeking artworks to be admired by the thousands of visitors they receive each year. Artwork will be hung for 6 months, with a statement, and may be for sale.

In the first instance please send a photograph of the artwork to : scrapstore@grcltd.org

the open west

NEWARK PARK

Ozleworth, Wotton-under Edge GL12 7PZ

7 – 10 August 2013

Drop in 11.30am – 4.00pm

FREE DRAWING WORKSHOPS

To coincide with the **the open west 2013** exhibition at Newark Park artists Debbie Locke and Sara Dudman have been selected to devise a series of drawing workshops and will invite visitors to Newark Park to join them in an informal, inquisitive and entertaining series of drawing processes. This opportunity will be of particular interest to families with children and those who want to explore innovative methods of drawing.

Debbie and Sara will provide a rolling programme of activities and participation opportunities which people can dip in and out of as they visit the workshops held in the summerhouse. These activities might include making drawing machines and wind powered kinetic mobiles, tracing movement using portable camera obscura and using GPS technology to draw whilst walking.

PHOTOGRAPHY AT REASONABLE PRICES !

An ideal service for any artist wishing to promote their work on a website or simply on the web or other online outlet; for preparing Portfolios for presentation: for those artists wishing to "print" out Limited Edition prints of their own oeuvre or even greeting cards....

My fee includes travel-usually 2 trips, set-up and consultation which is only £18 (environs Cheltenham) and perhaps a little more for further distances. For one single Artwork, a single image is £10 and for every further artwork and image this is reduced to only £5 per image. This fee DOES include full image processing of each image to ONE single specification of your choice. Choose from:-

a) JPEG (sRGB)-suitable for all web/online/screen output supplied to your specification from around 0.5->5MB

b) A4/A5 (RGB or CMYK) suitable for printing up to A4 around 10MB

c) A3 (RGB or CMYK) suitable for print reproduction...around 20 MB OR MORE...

Your choice of One of the above services is included in my fee but you may also have any other specification included at only £1 per image. For example if you would like both JPEGs AND A3 (or for that matter A4-5) size Files, then the total cost of each image costs only £1 extra. (*all 3 specifications together add only another £1 to each image).These are all separated into separate folders on the memory stick supplied...along with...

The full original uncropped shoot which will be provided free to do with as you will.

Images are supplied on a brand new and very versatile 4GB USB 2 Stick (Cost -only £6 or you may use your own of course.) You can use this stick to show your artwork to prospective clients or friends on any device that provides an USB input. Alternatively a CD or DVD will be supplied at very little cost...

For my work I use a Canon Full-frame camera and L lenses. These are excellent at pulling the depths of subtle colour from an image. I prefer to use natural light when photographing. I use a high resolution colour

monitor to process my images in the latest Photoshop to produce my final output. I have an outdated laptop (working on this!) to show you the results when delivering your stick to you.

For further info, or to arrange a shoot, please ring Mike on 01242 520190 or email mikespace@blueyonder.co.uk

FOR SALE : HIGH QUALITY PLINTHS

Jack Russell has available several well built plinths in three different heights. Made from 20mm MDF, glued and counter sunk screwed. Suitable for displaying sculptures and ceramics.

Small : £25.00 : 52cm highx39cmx39cm

Medium : £30.00 : 72cm highx39cmx39cm

Tallest : £35.00 : 92cm high x 39cm x39cm

Please text Jack Russell on 07887 922093 for further information

STRAND ARTS

Grosvenor Street, Cheltenham
Now open Mondays 10am – 4pm
Tues – Sat 9.30am – 5.00pm
Closed Sunday

Cheltenham's only dedicated art supplies shop.

My website is making progress. The first page is live, although the departments need changing and some contact details need adding. So its just a rough draft. The link is www.strandarts.co.uk. Please have a look and let me know your thoughts as I really do need the feedback.

New products: Golden Acrylic mediums
237ml £12.99 less 20%
Albert Durer watercolour pencils £1.60 each,
buy 3 or more 15% off
Pitt pastel pencils £1.60, buy 3 or more 15% off
Schmincke Artists 5ml watercolour tubes 15% off
Liquitex acrylics coming soon! Will be 25% OFF!!

More offers:
Buy 5 or more tubes of 60ml Galeria Acrylic for £10! makes it just £2.00 a tube!!
Buy 5 or more tubes of 37ml winton oils for

£10!! again makes it just £2.00 a tube!!

Please don't forget that I sell my Winsor & Newton paints, Daler/Rowney paints and their mediums at 20% below retail price.

I had a table selling my materials at the Gloucester art and craft summer school, on the Wednesday. It was very successful and I met some lovely people. If you would like me to come to your art group/class selling products then please let me know.

Nicky : Strand Arts 12 Grosvenor Street
Cheltenham 01242 253907

THE GARDENS GALLERY

Montpellier Gardens, Montpellier
Cheltenham
www.gardensgallery.co.uk

HIRE SHARE

Interested in hiring the gallery but would like to find someone to share the costs ? – the Gallery has a Hire Share arrangement whereby interested artists/ceramicists etc are listed and compatible ones are linked-up and put in touch with one another.

If interested then contact:
Frances Arrow : francesarrow@ymail.com

WAITING LIST

As the exhibition space is usually fully booked 18 months ahead the gallery maintains a list of artists who might be interested in hiring the space at short notice in the event of a cancellation.

If you are interested in joining the waiting list please contact :
Frances Arrow : francesarrow@ymail.com

SELL YOUR ART

Why not try selling your art on-line !
See The Gardens Gallery's Virtual Sales Gallery :

www.gardensgallery.co.uk/virtual-sales-gallery-2/

CHELTENHAM GROUP OF ARTISTS

www.cheltenhamgroupartists.org

The CGA, which is a group of professional and semi-professional artists, is seeking new members.

The Group favours artists whose work displays a novel, visionary, well developed and executed approach, as opposed to a conventional attitude.

To apply for membership please submit the following to Secretary, Judith Barker
cgasecretary@googlegmail.com:

- a brief CV
- a brief Statement
- 5 representative images of your work, in JPEG file format (less than 3MB per image)

GLOUCESTERSHIRE ARTS & CRAFTS CENTRE

4 College Street, Gloucester
Monday – Saturday : 10am – 5pm
Sunday : 12.00 – 4.30pm
www.glosartscrafts.co.uk

Twitter : @GlosArtsCrafts

Facebook : Gloucestershire ArtsandCrafts Centre



A warm welcome awaits you at the Gloucestershire Arts and Crafts Centre. Please do come and visit us in College Street, and take a look at some of the very affordable gifts and practical goods that we have made for your pleasure



Cirencester

www.newbreweryarts.org.uk

GALLERY FOR HIRE

The New Brewery Arts Pop Up Gallery is offered to makers, artists or photographers to make, show and sell their work without committing to a long term license. It is offered on a fixed hire period for a minimum of two weeks and differs from our gallery spaces in that we don't take commission and we even provide plinths for you to display your work.

You can advertise your Pop Up Gallery on our website. And because our Pop Up gallery is brilliantly placed just next to our main entrance, it benefits from being between the main Cirencester shopping area and Tesco's car park and gets all the passing trade.

It gives you the opportunity to show and sell your work, test the market, to try out a new range, promote a new product or service or work in partnership with other artists and makers.

You can do demonstrations and talks about your making or artwork and hold a launch party. You don't have to "give up" your existing studio - you can just try an alternative venue and we positively encourage you to be as funky or quirky as you like.

The Pop Up Gallery is available for hire at the following rates:

Jan-Feb	£150.00
March-Oct	£185.00
November	£250.00
December	£350.00

All rates are per week plus VAT inclusive of electricity. We also require a Key and Decoration deposit of £50.00 which is returnable at the end of the hire period.

For further information contact Ali Russell on ali@newbreweryarts.org.uk or telephone 01285 657181



Regent Arcade Cheltenham
www.by-local.co.uk

BYLOCAL

A unique boutique selling the work of 18 Gloucestershire Artists and Craftspeople. The artists take it in turns to man the shop & we have a wide selection of stock from knitted children's hats & bunting, original artwork, knitted wire & silver jewellery, porcelain, turned wood, handmade soaps, scarves, brooches, dichroic Jewellery, fused glass dishes and pictures, prints, T-shirts, decorative ceramics, and cards.