

a monthly visual arts bulletin covering exhibitions and news in the Cheltenham area
published by bob freeman e : bob@rifreeman.co.uk

EXHIBITIONS

THE GARDENS GALLERY

Montpellier Gardens, Montpellier, Cheltenham
www.gardensgallery.co.uk
Core Hours :10am – 5pm
Twitter: @gardensgallery
Facebook: The Gardens Gallery

Until 4 June 2013

'FOUR COTSWOLD ARTISTS'

ALISON ROBERTSON-GOFF, NICHOLAS RAINEY, ANNE BATE WILLIAMS & MICHELLE WATLING

Abstract and floral paintings in oil and acrylic.
Figurative sculptures in cement and bronze resin. Paintings and mixed media collages



Anne Bate Williams



Alison Robertson-Goff

5 – 18 June 2013



VENUE NO 1 of COS13

This Gardens Gallery exhibition is part of COS13.

Original Paintings, Drawings, Pottery, Jewellery, Limited edition prints, Cards and Gifts for sale by **Jill Bateman, Ann Sohn-Rethel, Sue Naydorf, Sue Perry, Jan Thompson, Annette Turner, Michelle Watling, Frances Whitman.**

Opening hours:

Monday – Friday 10am – 5pm

Saturdays – 10am – 7pm

Sundays – 11 – 4 pm



Frances Whitman



Jan Thompson



Ann Sohn-Rethel

19 – 25 June 2013

'FRUITS OF A SECOND LIFE'

JEANNE ARNO & PETER CHAMBERLAIN

Oil paintings on board, still life and landscapes and wooden sculpture



Jeanne Arno



Peter Chamberlain

26 June – 2 July 2013

NICKI GWYNN-JONES & RAY HILL

Bird photography and landscape painting



Nicki Gwynn-Jones



Ray Hill



CHELTENHAM OPEN STUDIOS 2013
78 VENUES
THROUGHOUT CHELTENHAM
& SURROUNDING 20 MILE RADIUS

8 – 16 June 2013

COS13

This biennial celebration of the visual arts links together 78 different exhibition venues. For the uninitiated, the event is about getting up close and personal with the work being made locally. You can talk with the artists, watch them at work or be inspired to have a go in one of a range of hands-on workshops. It offers anyone interested in art first-hand insight into the creative process. It's also a great way to pick up some beautiful original art at affordable prices, direct from the artist.

Focused on the centre of Cheltenham the art trail radiates out as far as Twyning and Broadway, in the North, Stow, in the East, Elkstone, to the South, and Longlevens, to the West.

Free, colour, art-trail guides will be available from Cheltenham Tourist Information office or the COS website www.cheltenhamopenstudios.org.uk

THE HUB GALLERY

Christ Church
Malvern Road, Cheltenham

8 – 16 June 2013



VENUE NO 15 OF COS13

Faith Through Art Exhibition

Six artists' contemporary perspectives on faith.

plus

A Taste of the work of 9 COS13 Artists

who are showing at various COS13 venues plus

Small Art Show and Sale

Specially commissioned originals by COS13 artists, each measuring 5"x5" for £5 each.

PARABOLA ARTS CENTRE

Parabola Road, Cheltenham GL50 3AA
www.parabolaartscentre.co.uk/

Open: 12 noon – 5pm, Mon – Sat



VENUE NO 19 OF COS13

8 – 28 June 2013

Paintings, sculpture, printwork, photography & jewellery by Robert Goldsmith, Jo Lucas, Catherine Stuart, Lee Crew, Jane Sasanow, Nicki Gwynn-Jones & Laure Filho.



Jane Sasanow

MEANTIME

Oxford Passage, off St Margaret's Road,
Cheltenham GL50 4EF
<http://meantime.org.uk>

3 – 30 June 2013

RESIDENCY: KATHRYN ASHILL For Future Reference

For Future Reference is an ongoing project which aims to collect and archive predictions made about Kathryn Ashill's future through visits to fortune tellers, psychics and clairvoyants. MEANTIME will be the venue where alternative futures are tested, played out and presented through performance, sound, video, writing and drawing.



THE MONTPELLIER GALLERY

First Floor, 1 Montpellier Terrace
Cheltenham GL50 1UR
www.themontpellier.co.uk/gallery



VENUE NO 3 OF COS13

8 – 29 June 2013

GROUP SHOW

An exciting mixed-media exhibition by three members of the White family – Jackie, Richard and Nick.



COFFEE & CO

7 Montpellier Terrace, Cheltenham
www.coffeeandco.co.uk



VENUE NO 2 OF COS13

8 – 16 June 2013

Landscapes, seascapes and drawings by Sue Durkin and her students



Sue Durkin

POP UP GALLERY

6 Suffolk Parade, Montpellier, Cheltenham



VENUE 27 OF COS13

8 – 16 June 2013

ALEX BEECHING & SALLY RYDE

Beeching and Ryde have joined forces to produce photography, shadow sculptures and tableaux, a whimsical homage to film noir by means of artifice and visual slight of hand.



MARTIN'S GALLERY

Imperial House, No. 3, Montpellier Parade
CHELTENHAM, Gloucestershire, GL50 1UA

Open: Wednesday - Saturday 11am - 6pm or any other time by arrangement

www.martinschelt.co.uk

During June and July 2013 the gallery is open by appointment only – Tel : 01242-526044

MIXED SUMMER 2013

An impressive mixed collection with names such as Sandra Blow, Sir William Russell Flint, Terry Frost, Ken Howard, Carlos Nadal and Sir Kyffin Williams.



Sir Terry Frost

ONE4ART

14 Imperial Square, Cheltenham
Next to Town Hall

NEW ART GALLERY OPENS !!!

4 – 16 June 2013

10.30am – 6pm daily

Nick Purchase and Douglas Chome Wilson have opened this new art gallery next door to the Town Hall in Cheltenham.

The first exhibition is featuring artists **Howard Morgan, Jane Lewis, Plum Neasmith, Karen Brighton, Steve Slimm, Henrietta Duprey, Peter Hayes, Paul Aston, Peter Granville-Edmunds and others.**



THE TIMES CHELTENHAM SCIENCE FESTIVAL

The Spa Well, The Town Hall, Cheltenham



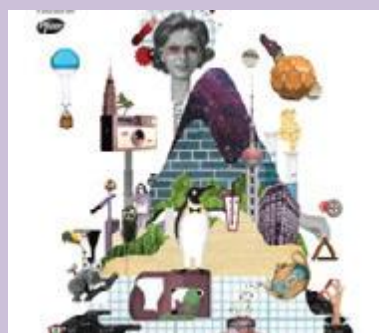
VENUE 21 OF COS13

4 – 9 June 2013

10am – 10pm

GROUP SHOW

Mixed media exhibition showing science inspired work by COS13 artists



'ART IN THE PARK'
Imperial Gardens Cheltenham

22 June – 21 July 2013



The 44th annual 'Art in the Park' in Cheltenham will start on Saturday 22nd June 2013 and will run for 4 weeks, until Sunday 21st July 2013, with different artists exhibiting their work each week.

The format of the event allows the paintings on offer to be highly affordable, and with over 100 artists taking part there's something for everyone. There are bags of style and talent on display, with artists showing original work in oils, watercolours, pastels, pencils and acrylics.

www.cheltenham-art.com/exhibition.htm

This year's exhibition is to be opened by Martin Horwood MP

PARAGON GALLERY

4 Rotunda Terrace, Montpellier Street,
Cheltenham GL50 1SW
www.paragongallery.co.uk

An exhibition offering a wide diversity of art across subject, media and style, from the classical to the avant-garde, from local, UK and international artists



Sabir & Svetlana Gadzhiev

**UNIVERSITY OF GLOUCESTERSHIRE
SCHOOL OF ART & DESIGN**

Frances Close Hall Campus
and
Centre for Art & Photography Hardwick Campus
St Pauls Road, Cheltenham

1 – 7 June 2013

10am – 4pm

DEGREE SHOW

The annual exhibition of final year student's work.



HADFIELD FINE ART

The Pool House, South Paddock,
Sevenhampton Glos GL54 5SW
www.hadfieldfineart.co.uk

Sat 1 and Sun 2 June 2013

10am – 5pm

DROP IN WEEKEND

Drop in and browse - no need for an appointment. Original Contemporary Art; Paintings, Drawings, Sculpture & Ceramics.

Artists include: Carl Melegari, Jenny Hirst, Betty Harrison, Chrissy Silver and many more.



COTSWOLD OPEN STUDIOS

29 – 30 June 2013
9.30am – 5.30pm

HIDDEN TREASURES

There will be a real buzz around Cirencester over the weekend of 29-30 June. Professional artists and makers have been selected - many have international reputations and yet the public has not had a chance to connect with their work. The 38 exhibitors (across 17 venues) are keeping the Arts and Crafts tradition alive in Gloucestershire. This is an impressive line-up with some big international names, including Laurence Llewelyn-Bowen, Richard Kenton Webb, Fiona McIntyre, Adam Binder, Sophie Ryder, Christopher Johnson, John Lendis, David Garland, Darrell Warner and Justine Osborne.

Further information about the event: collect a brochure from The Corinium Museum or New Brewery Arts or contact Tessa Webb on 01285 651790.

www.creativesintobusiness.com or

<http://cotswoldopenstudios.eventbrite.co.uk>

See also Corinium Museum



Sophie Ryder



Laurence Llewelyn-Bowen

CORINIUM MUSEUM

Park Street, Cirencester GL7 2BX
www.coriniummuseum.org

22 June – 19 July 2013

COTSWOLD OPEN STUDIOS SHOWCASE EXHIBITION

a group show, with one piece by each of the artists and makers taking part in the Cotswold Open Studios.

Artist talks and opening: 11am-1pm on Saturday 22 June.



NEW BREWERY ARTS

Cirencester

www.newbreweryarts.org.uk/



VENUE 69 OF COS13

11 – 23 June 2013

LAURE FILHO

Beautiful, unusual but wearable jewellery using precious metals and stones. Plus **SOPHIE ELM** (Linocut prints), **NICKI CREW** (fused glass) and **ROSIE LOMBERG** (paintings)



Laure Filho

GLOUCESTER WATERWAYS MUSEUM

The Docks, Gloucester

www.canalrivertrust.org.uk/gloucester-waterways-museum

1 – 22 June 2013
11am – 4pm

'YEAR OF THE BOAT'

Inspired by the beauty of the nation's waterways, highly acclaimed artist Rob Pointon embarked on a year-long painting project, *Year of the Boat*, touring the canals and rivers on a narrowboat. Now Gloucester Waterways Museum is showcasing the key pieces of the year's tour, with emphasis on the docks and waterways in and around Gloucester.



NATURE IN ART

Twigworth

www.nature-in-art.org.uk

4 June – 14 July 2013

TALONS & TIARAS

The first showing anywhere of new contemporary evening dresses and headdresses, each inspired by a British bird combined with vintage couture from the 1930's to 1960's, by renowned dress designer and textile artist **Kate Plumtree**.



art e.noticeboard

PHOTOGRAPHY OF ARTWORKS AT REASONABLE PRICES !!!

An ideal service for any artist wishing to promote their work on a website or simply on the web or other online outlet; for preparing Portfolios for presentation: for those artists wishing to "print" out Limited Edition prints of their own oeuvre or even greeting cards....

My fee includes travel-usually 2 trips, set-up and consultation which is only £18 (environs Cheltenham) and perhaps a little more for further distances. For one single Artwork, a single image is £10 and for every further artwork and image this is reduced to only £5 per image. This fee DOES include full image processing of each image to ONE single specification of your choice. Choose from:-

a) JPEG (sRGB)-suitable for all web/online/screen output supplied to your specification from around 0.5->5MB

b) A4/A5 (RGB or CMYK) suitable for printing up to A4 around 10MB

c) A3 (RGB or CMYK) suitable for print reproduction...around 20 MB OR MORE...

Your choice of One of the above services is included in my fee but you may also have any other specification included at only £1 per image. For example if you would like both JPEGs AND A3 (or for that matter A4-5) size Files, then the total cost of each image costs only £1 extra. (*all 3 specifications together add only another £1 to each image).These are all separated into separate folders on the memory stick supplied...along with...

The full original uncropped shoot which will be provided free to do with as you will.

Images are supplied on a brand new and very versatile 4GB USB 2 Stick (Cost -only £6 or you may use your own of course.) You can use this stick to show your artwork to prospective clients or friends on any device that provides an USB input. Alternatively a CD or DVD will be supplied at very little cost...

For my work I use a Canon Full-frame camera and L lenses. These are excellent at pulling the depths of subtle colour from an image. I prefer to use natural light when photographing. I use an high resolution colour monitor to process my images in the latest Photoshop to produce my final output. I have an outdated laptop (working on this!) to show you the results when delivering your stick to you.

For further info, or to arrange a shoot, please ring Mike on 01242 520190 or email mikespace@blueyonder.co.uk

FOR SALE : HIGH QUALITY PLINTHS

I have available seventeen well built plinths in three different heights. Made from 20mm MDF, glued and counter sunk screwed. Suitable for displaying sculptures and ceramics.

Small £25 : 52cm high x 39cm x 39cm
Medium £30 : 72cm high 39cm x 39cm
Tallest £35 : 92cm high x 39cm x 39cm

Please text Jack Russell on 07887 922093 for further information

GLOUCESTERSHIRE RESOURCE CENTRE

City Works, Alfred Street, Gloucester GL1 4DF

CALL FOR ARTISTS

This dynamic community hub in Gloucester is seeking artworks to be admired by the thousands of visitors they receive each year. Artwork will be hung for 6 months, with a statement, and may be for sale.

In the first instance please send a photograph of the artwork to : scrapstore@grcltd.org

STRAND ARTS

Grosvenor Street, Cheltenham
Now open Mondays 10am – 4pm
Tues – Sat 9.30am – 5.00pm
Closed Sunday

Cheltenham's only dedicated art supplies shop

I just want to make sure that everyone is aware of my LOWER PRICES:

STRAND ARTS IS NOW SELLING THE MAIN PAINT RANGES AT 20% lower than retail price. I am extremely price competitive. I can offer free delivery if the spend is £20 or more.

Nicky : Strand Arts 12 Grosvenor Street
Cheltenham 01242 253907

THE GARDENS GALLERY

Montpellier Gardens, Montpellier
Cheltenham
www.gardensgallery.co.uk

HIRE SHARE

Interested in hiring the gallery but would like to find someone to share the costs ? – the Gallery has a Hire Share arrangement whereby interested artists/ceramicists etc are listed and compatible ones are linked-up and put in touch with one another.

If interested then contact:

Frances Arrow : francesarrow@ymail.com

WAITING LIST

As the exhibition space is usually fully booked 18 months ahead the gallery maintains a list of artists who might be interested in hiring the space at short notice in the event of a cancellation.

If you are interested in joining the waiting list please contact :

Frances Arrow : francesarrow@ymail.com

SELL YOUR ART

Why not try selling your art on-line !
See The Gardens Gallery's Virtual Sales Gallery :

www.gardensgallery.co.uk/virtual-sales-gallery-2/

CHELTENHAM GROUP OF ARTISTS

www.cheltenhamgroupartists.org

The CGA, which is a group of professional and semi-professional artists, is seeking new members.

The Group favours artists whose work displays a novel, visionary, well developed and executed approach, as opposed to a conventional attitude.

To apply for membership please submit the following to Secretary, Judith Barker
cgasecretary@googlemail.com:

- a brief CV
- a brief Statement
- 5 representative images of your work, in JPEG file format (less than 3MB per image)

GLOUCESTERSHIRE ARTS & CRAFTS CENTRE

4 College Street, Gloucester

Monday – Saturday : 10am – 5pm

Sunday : 12.00 – 4.30pm

www.glosartscrafts.co.uk

Twitter : @GlosArtsCrafts

Facebook : Gloucestershire ArtsandCrafts Centre



A warm welcome awaits you at the Gloucestershire Arts and Crafts Centre. Please do come and visit us in College Street, and take a look at some of the very affordable gifts and practical goods that we have made for your pleasure



Cirencester

www.newbreweryarts.org.uk

GALLERY FOR HIRE

The New Brewery Arts Pop Up Gallery is offered to makers, artists or photographers to make, show and sell their work without committing to a long term license. It is offered on a fixed hire period for a minimum of two weeks and differs from our gallery spaces in that we don't take commission and we even provide plinths for you to display your work.

You can advertise your Pop Up Gallery on our website. And because our Pop Up gallery is brilliantly placed just next to our main entrance, it benefits from being between the main Cirencester shopping area and Tesco's car park and gets all the passing trade.

It gives you the opportunity to show and sell your work, test the market, to try out a new range, promote a new product or service or work in partnership with other artists and makers.

You can do demonstrations and talks about your making or artwork and hold a launch party. You don't have to "give up" your existing studio - you can just try an alternative venue and we positively encourage you to be as funky or quirky as you like.

The Pop Up Gallery is available for hire at the following rates:

Jan–Feb	£150.00
March–Oct	£185.00
November	£250.00
December	£350.00

All rates are per week plus VAT inclusive of electricity. We also require a Key and Decoration deposit of £50.00 which is returnable at the end of the hire period.

For further information contact Ali Russell on ali@newbreweryarts.org.uk or telephone 01285 657181



Regent Arcade Cheltenham
www.by-local.co.uk

BYLOCAL

A unique boutique selling the work of 18 Gloucestershire Artists and Craftspeople. The artists take it in turns to man the shop & we have a wide selection of stock from knitted children's hats & bunting, original artwork, knitted wire & silver jewellery, porcelain, turned wood, handmade soaps, scarves, brooches, dichroic Jewellery, fused glass dishes and pictures, prints, T-shirts, decorative ceramics, and cards.