

cheltenham

art e.bulletin

a monthly visual arts bulletin covering exhibitions and news in the Cheltenham area
published by bob freeman e : bob@rifreeman.co.uk

MAY 2013

EXHIBITIONS

THE GARDENS GALLERY

Montpellier Gardens, Montpellier, Cheltenham
www.gardensgallery.co.uk
Core Hours :10am – 5pm
Twitter: @gardensgallery
Facebook: The Gardens Gallery

DON'T FORGET IT'S THE CHELTENHAM JAZZ FESTIVAL IN MONTPELLIER GARDENS 1 -6 MAY 2013

1 – 7 MAY 2013

'DIVERSITY'

MELANIE THORN, RITA THORN, JEANETTE FAULKNER CLARKE

Drawings, paintings, mixed media



Jeanette Faulkner Clarke

8 – 14 May 2013

'BLOOM'

SOPHIA BLOXHAM, LUCY BODEN, LIZ CLAYTON, EMMA RIDGWAY & KATIE THOMAS

A spring collection of art, illustration and design

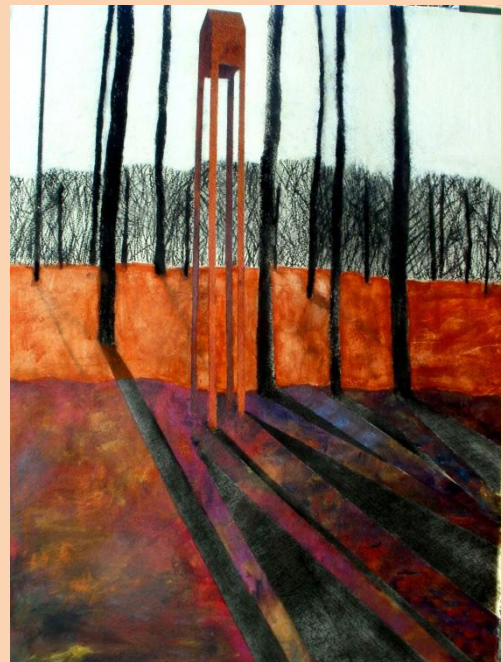


15 – 21 May 2013

'IN A DIFFERENT LIGHT'

ELISABETH LE VIERGE & SALLY WILLIAMS

Oils, acrylics, mixed media abstracts and landscapes



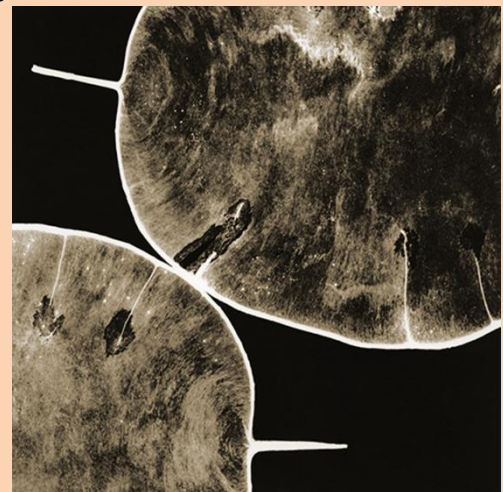
Sally Williams

22 – 28 May 2013

'FOUR THOUGHTS'

LISA LAVERY, NICKY FORDYCE, LUCY GRESLEY & DENISE CAIN

An exhibition of innovative art and photography by four Gloucestershire-based artists



Lisa Lavery

29 May – 4 June 2013

'FOUR COTSWOLD ARTISTS'

**ALISON ROBERTSON-GOFF, NICHOLAS RAINEY,
ANNE BATE WILLIAMS & MICHELLE WATLING**

Abstract and floral paintings in oil and acrylic.
Figurative sculptures in cement and bronze
resin. Paintings and mixed media collages



PARABOLA ARTS CENTRE

Parabola Road, Cheltenham GL50 3AA

www.parabolaartscentre.co.uk/

Open: 12 noon – 5pm, Mon – Sat

Until 18 May 2013

DAVE STOKES PHOTOGRAPHY

This exhibition, by local photographer Dave Stokes, in collaboration with Mike Drummond, brings to the PAC galleries an interactive exhibition that will question how much of one's personality is given away purely by appearance.



Dave Stokes

21 – 25 May 2013

SUE RYDER 60TH ANNIVERSARY EXHIBITION

To celebrate their anniversary, the Bath Road Sue Ryder Charity shop is organising this exhibition, displaying a range of work in different mediums which have been donated to the charity. All the works will be for sale to raise funds for the local Leckhampton Court Hospice.

"We hope you can come and support the event and help us to continue delivering incredible care for the next 60 years."



MEANTIME

Oxford Passage, off St Margaret's Road,
Cheltenham GL50 4EF
<http://meantime.org.uk>

Until 5 May 2013

MA GROUP PROJECT

Open event: Friday 3rd May, 6-8pm

Herdie Ali Kardi, Caroline Green, Alice Leeman and Anthea Millier, from the University of Gloucestershire Fine Art MA programme, present Perambulation, the culmination of a month's working at MEANTIME, developing and producing individual projects.

Works include photography and print-making, sculptural works, and charcoal drawings representing the aftermath of conflict.

6 May – 2 June 2013

RESIDENCY : KATE OGLEY

'A Daydream of Elsewhere' (Bachelard)

Kate Ogley is increasingly drawn to explore the nature of song as an elusive record of memory, dreams, longing and identity. Working with local communities she intends to register, through the encounter of song, the diverse range of nationalities that make up the population of Cheltenham.

Kate will consider how memories of lives lived elsewhere are overlaid and interwoven into the experience of the town's particular architecture, and how the buildings themselves may house and give shape to these imaginings. Kate intends to create a trail of sound interventions within the town that reflect on many facets of the migrant experience in Cheltenham.

Open Studio: Saturday 11th May, 11am-4pm.

An introduction to the project.

Final event: Thursday 30th May, 7-9pm.

Includes discussion with respondent Gavin McClafferty.

Exhibition open: Friday 31st May and Saturday 1st June, 11am-4am

THE MONTEPELLIER GALLERY

First Floor, 1 Montpellier Terrace
Cheltenham GL50 1UR
www.themontpellier.co.uk/gallery

Open Night Weds 1 May 2013 6pm – 9pm 'FIGURE & FORM'

An exhibition of works by **Matthew Dean, Gill Cox, Sally Fisher and Jane Baker**

Matthew will be doing Live Art Demonstrations of his Movement Study Paintings.

Triple Sec Jazz Trio are playing in the gallery.



PARAGON GALLERY

4 Rotunda Terrace, Montpellier Street,
Cheltenham GL50 1SW
www.paragongallery.co.uk

An exhibition offering a wide diversity of art across subject, media and style, from the classical to the avant-garde, from local, UK and international artists



Jan Sweeny



Robert Goldsmith

COFFEE & CO

7 Montpellier Terrace, Cheltenham
www.coffeeandco.co.uk

Until 31 May 2013

'DAWN CHORUS'

JANIE RANGER & SUE BILLINGTON

An exhibition of drawings.



Janie Ranger

CURVE GALLERY

Churchdown School Academy
Winston Road, Churchdown Gloucester GL3 2RB

Until 26 May 2013

PAUL MCKEE

This solo exhibition by Paul McKee highlights new work alongside key pieces from the past three decades. Paul's work has been through a number of changes over the years and this exhibition, whilst offering the first opportunity to see those changes, also shows a continued interest in making works of art that are imbued with a distinctive spirit. The subject matter may reflect the usual interests of the artist – the figure, landscape, still-life, myths and stories – but they are approached with an inquisitive eye, searching for form and expression.



Paul McKee

STROUD INTERNATIONAL TEXTILE FESTIVAL

www.stroudinternationaltextiles.org.uk

Until 26 May 2013 Closed Mons except Bank Hols
Tues – Fri 10am – 5pm Sat & Sun 11am – 5pm

MUSEUM IN THE PARK

Stratford Park, Stroud

SPRING SELECT 2013

Stroud International Textiles is a not for profit arts organization dedicated to the promotion of the arts with an emphasis on contemporary textiles and the applied arts/crafts.



11 – 12 May & 18 – 19 May 2013 11am – 6pm

SELECT TRAIL 2013

Two weekends of Open Studio exhibitions at 36 venues. Now in its third year the Select Trail 2013 offers work from textile and contemporary craft makers who live and work in the glorious Stroud Valleys. You are assured of a warm welcome from the makers as they open their doors to their unique and private studios, and the individual artist-led exhibitions.

STICKY PAPER STUDIO

Lansdown Walk Lansdown Road, Cheltenham
GL50 2L

www.stickypaperstudio.co.uk

11-12 May & 18-19 May 11am to 6pm

In association with Stroud Textile Festival 2013

A group of six artists who work in paper collage, whose inspiration is fashion, textiles and ornament. **Liz Valenti, Diane Jeffries, Kate McTiffin, Gabriel Broad, Susi Harris, Tamsin Golesworthy.**



NEW BREWERY ARTS

Cirencester

www.newbreweryarts.org.uk/

Until 12 May 2013

'COLOUR'

"Why do two colours, put one next to the other, sing? Can one really explain this? No. Just as one can never learn how to paint".
Pablo Picasso

Colour is curated to demonstrate work that has a visual impact of specific colour combinations and to show artists who use hue, saturation and light to make visual statements in a variety of contemporary craft forms.



18 May – 7 July 2013

'VOICES'

Expect to have your expectations of quilt making challenged by the latest exhibition from **Quilt Art**.

The exhibition is linked to the Stroud International Textile Festival 2013.



CORINIUM MUSEUM

Park Street, Cirencester GL7 2BX

www.coriniummuseum.org

Until 6 May 2013

'FOLLIES & WHISKERS'

LESLEY DAVIES & ELORA TAYLOR

An eclectic exhibition of intricate paintings and drawings by a mother and daughter duo.



10 May – 15 June 2013

'MAKING A POINT'

EAST ANGLIAN STITCH TEXTILES

EAST is a group recognised for their excellent and innovative use of a wide range of textile techniques.



NATURE IN ART

Twigworth

www.nature-in-art.org.uk

Until 5 May 2013

BIRDS, BLOCKS AND STAMPS

Master wildlife printmaker Robert Gillmor SWLA was invited by Royal Mail to design four series of six stamps for the new self-service stamp dispensers – 'Post and Go'. This display presents all the original multi-coloured linocuts that make up the series together with supporting materials, blocks, sketches, stamps etc.



Robert Gillmor

7 May – 2 June 2013

'POSTCARD PORTRAITS'

Coinciding with Nature in Art's 25th Anniversary this is a spectacularly diverse display of unique A5 original works of art created by over 250 artists with whom the museum has an association.

art e.noticeboard

CALL FOR ARTISTS

EXHIBITION IN AID OF SUE RYDER LECKHAMPTON HOSPICE

On May the 21st- 25th 2013 Sue Ryder Bath Road shop will be putting on an exhibition to raise funds for our local Leckhampton Hospice, celebrating The 60th Anniversary. The exhibition will take place in the Parabola Arts Centre, part of Cheltenham Ladies College – see exhibitions earlier above.

We are asking local artists if they would like to donate a piece of work towards the exhibition, work can be any medium or subject matter but preferably framed, which would then be sold to help us raise funds for this fantastic local cause. All artworks within the exhibition would have accompanying information about the artist and links to their websites and contact details. So in return for your generous donation you will have free promotion/advertisement of your work at this prestigious event.

If you or anyone you know is interested in donating a piece of work please contact:

Tanya Openshaw email:

tanya.openshaw@suerydercare.org

phone: 01242261981 (9am-5pm)

or in person by visiting our Bath Road shop.

**PLEASE NOTE: The deadline to hand in work is
Sat 4th May**

COFFEE AND CO

7 Montpellier Terrace, Cheltenham

GALLERY HANGING SPACE AVAILABLE

Contact info@coffeeandco.co.uk

Tel : 01242 285965

GLOUCESTERSHIRE RESOURCE CENTRE

City Works, Alfred Street, Gloucester GL1 4DF

CALL FOR ARTISTS

This dynamic community hub in Gloucester is seeking artworks to be admired by the thousands of visitors they receive each year. Artwork will be hung for 6 months, with a statement, and may be for sale.

In the first instance please send a photograph of the artwork to :
scrapstore@grcltd.org

'ART IN THE PARK' : CHELTENHAM CALL FOR ARTISTS



The 44th annual 'Art in the Park' in Cheltenham will start on Saturday 22nd June 2013 and will run for 4 weeks, until Sunday 21st July 2013, with different artists exhibiting their work each week. The format of the event allows the paintings on offer to be highly affordable, and with over 100 artists taking part there's something for everyone. There are bags of style and talent on display, with artists showing original work in oils, watercolours, pastels, pencils and acrylics.

Artists wishing to take part should consult the website for further details and a full list of the rules and regulations before applying.

Contact email:

allocations@cheltenham-art.com

website:

www.cheltenham-art.com/exhibition.htm

This year's exhibition is to be opened by
Martin Horwood MP



OWL BARN RESIDENCY

The Owl Barn, The Tallet,,Calmsden,
Cirencester, Gloucestershire GL7 5ET

Owl Barn Residency is a community of artists, makers and thinkers. A space for residents to develop their own creative practice as well as possibilities to engage with the local community.

The residency works as an exchange. Residents are offered a free studio space in the Owl Barn, a space to live in the parlour below and basic food. In return we ask residents to give three hours a day from Monday to Friday to community work in the local area and working on the land around the Owl Barn.

The Spring art classes include :

Sunday 12 May 2013

FOCUSSING ON IMPROVING SCREEN PRINTING SKILLS

£40/day plus £5 for materials

Sunday 18 May 2013

INTRODUCTION TO SIMPLE PRINTMAKING SKILLS

£40/day plus £5 for materials

Tuesday 28 May 2013

CHILDREN'S TEASHIRT PRINTING

£30/day plus £5 for materials

Please email your name and address if you would like to book :

vanessa@vanessaarbuthnott.co.uk



BOTANICAL ART CLASS

Castle House Hotel, Castle Street,
Hereford HR1 2NW
www.castlehse.co.uk
01432 356321

9 May 2013

A *One-to-One Workshop* with the award-winning botanical artist **Helen Campbell**. Helen recently collaborated with Westons Cider to capture and record for posterity, the many varieties of blossoms and fruits of trees in their old orchards. Self-taught after years of ignoring her *dormant* talent, Helen will show how with botanical art, the detail is everything.

Time: 10.30 until 3pm

Ticket: £35 includes coffee, all materials and two-course lunch



Helen Campbell

STRAND ARTS

Grosvenor Street, Cheltenham
Now open Mondays 10am – 4pm
Tues – Sat 9.30am – 5.00pm
Closed Sunday

Cheltenham's only dedicated art supplies shop
I just want to make sure that everyone is aware of my LOWER PRICES:

STRAND ARTS IS NOW SELLING THE MAIN PAINT RANGES AT 20% lower than retail price. I am extremely price competitive. I can offer free delivery if the spend is £20 or more.

Nicky : Strand Arts 12 Grosvenor Street
Cheltenham 01242 253907

THE GARDENS GALLERY

Montpellier Gardens, Montpellier
Cheltenham
www.gardensgallery.co.uk

HIRE SHARE

Interested in hiring the gallery but would like to find someone to share the costs ? – the Gallery has a Hire Share arrangement whereby interested artists/ceramicists etc are listed and compatible ones are linked-up and put in touch with one another.

If interested then contact:
info@gardensgallery.co.uk

SELL YOUR ART

Why not try selling your art on-line!
See The Gardens Gallery's Virtual Sales Gallery :

www.gardensgallery.co.uk/virtual-sales-gallery-2/

CHELTENHAM GROUP OF ARTISTS

www.cheltenhamgroupartists.org

The CGA, which is a group of professional and semi-professional artists, is seeking new members.

The Group favours artists whose work displays a novel, visionary, well developed and executed approach, as opposed to a conventional attitude.

To apply for membership please submit the following to Secretary, Judith Barker
cgasecretary@googlemail.com:

- a brief CV
- a brief Statement
- 5 representative images of your work, in JPEG file format (less than 3MB per image)

GLoucestershire Arts & Crafts Centre

4 College Street, Gloucester

Monday – Saturday : 10am – 5pm

Sunday : 12.00 – 4.30pm

www.glosartscrafts.co.uk

Twitter : @GlosArtsCrafts

Facebook : Gloucestershire ArtsandCrafts Centre



A warm welcome awaits you at the Gloucestershire Arts and Crafts Centre .Please do come and visit us in College Street, and take a look at some of the very affordable gifts and practical goods that we have made for your pleasure



Cirencester

www.newbreweryarts.org.uk

GALLERY FOR HIRE

The New Brewery Arts Pop Up Gallery is offered to makers, artists or photographers to make, show and sell their work without committing to a long term license. It is offered on a fixed hire period for a minimum of two weeks and differs from our gallery spaces in that we don't take commission and we even provide plinths for you to display your work.

You can advertise your Pop Up Gallery on our website. And because our Pop Up gallery is brilliantly placed just next to our main entrance, it benefits from being between the main Cirencester shopping area and Tesco's car park and gets all the passing trade.

It gives you the opportunity to show and sell your work, test the market, to try out a new range, promote a new product or service or work in partnership with other artists and makers.

You can do demonstrations and talks about your making or artwork and hold a launch party. You don't have to "give up" your existing studio - you can just try an alternative venue and we positively encourage you to be as funky or quirky as you like.

The Pop Up Gallery is available for hire at the following rates:

Jan–Feb	£150.00
March–Oct	£185.00
November	£250.00
December	£350.00

All rates are per week plus VAT inclusive of electricity. We also require a Key and Decoration deposit of £50.00 which is returnable at the end of the hire period.

For further information contact Ali Russell on ali@newbreweryarts.org.uk or telephone 01285 657181



Regent Arcade Cheltenham
www.by-local.co.uk

BYLOCAL

A unique boutique selling the work of 18 Gloucestershire Artists and Craftspeople. The artists take it in turns to man the shop & we have a wide selection of stock from knitted children's hats & bunting, original artwork, knitted wire & silver jewellery, porcelain, turned wood, handmade soaps, scarves, brooches, dichroic Jewellery, fused glass dishes and pictures, prints, T-shirts, decorative ceramics, and cards.